

Nova Pure



Matching Colour Caps

Individual Naming

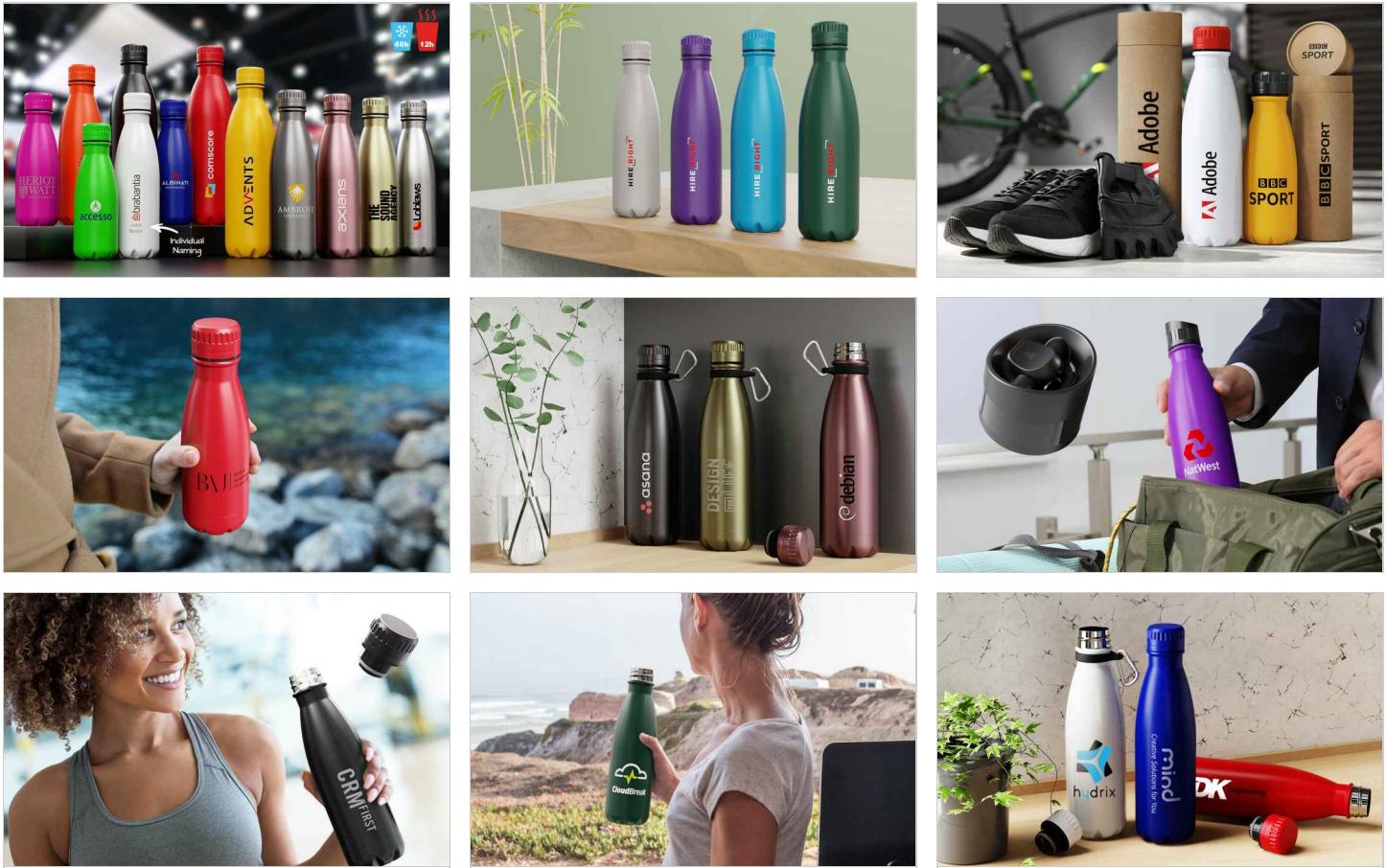


Solid Colours

Metallic Colours

- No-spill lid
- Cold drinks stay cold
- Hot drinks stay hot
- No nasty chemicals
- Durable
- Double-walled insulation

The Nova Pure is made from high quality food-grade stainless steel and features double-walled vacuum insulation that keeps hot drinks hot and cold drinks cold. Related to our [Nova Water Bottle](#), the Nova Pure also features a matching lid colour to the body of the water bottle. A fantastic promotional product that's ready to be branded with your logo and used daily.



Nova Pure

Colours



Lead Time

7 working days

Branding



Branding Area

Screen Printing

Nova Pure 260

Area Side: 55mm X 60mm
(2.17X2.36 inches)

Nova Pure 500

Area Side: 70mm X 80mm
(2.76X3.15 inches)

Nova Pure 750

Area Side: 79mm X 110mm
(3.11X4.33 inches)

Nova Pure 1000

Area Side: 85mm X 130mm
(3.35X5.12 inches)

Photo Printing

Nova Pure 260

Area Side: 55mm X 60mm
(2.17X2.36 inches)

Nova Pure 500

Area Side: 70mm X 80mm
(2.76X3.15 inches)

Nova Pure 750

Area Side: 79mm X 110mm
(3.11X4.33 inches)

Nova Pure 1000

Area Side: 85mm X 130mm
(3.35X5.12 inches)

Laser Engraving

Nova Pure 260

Area Side: 50mm X 55mm
(1.97X2.17 inches)

Nova Pure 500

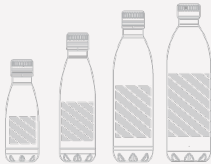
Area Side: 65mm X 80mm
(2.56X3.15 inches)

Nova Pure 750

Area Side: 75mm X 100mm
(2.95X3.94 inches)

Nova Pure 1000

Area Side: 75mm X 100mm
(2.95X3.94 inches)



Dimensions and Weight

Nova Pure 260

Height: 205mm (8.07 inches)
Diameter: 66mm (2.6 inches)
Weight: 219 grams (7.72 ounces)

Nova Pure 500

Height: 258mm (10.16 inches)
Diameter: 72mm (2.83 inches)
Weight: 275 grams (9.7 ounces)

Nova Pure 750

Height: 302mm (11.89 inches)
Diameter: 80mm (3.15 inches)
Weight: 402 grams (14.18 ounces)

Nova Pure 1000

Height: 323mm (12.72 inches)
Diameter: 89mm (3.5 inches)
Weight: 468 grams (16.51 ounces)